



Old Post Cottage, Porth Bean Road, Newquay, TR7 3LU

david ball
Agencies

This charming coastal cottage offers stunning sea views, two well-proportioned bedrooms, a modern fitted kitchen, and gas central heating. With private parking and an excellent location close to local amenities, it provides both comfort and convenience, making it an ideal home or investment opportunity.

£325,000 Freehold

Key Features

- SEA VIEWS
- PARKING
- DOUBLE GLAZING
- ORIGINAL FEATURES
- TWO BEDROOMS
- GAS CENTRAL HEATING
- FITTED KITCHEN
- GREAT HOLIDAY LET POTENTIAL

LOCATION

Located a stones throw away from the beautiful family Porth Beach is this idyllic two bedroom family home. Porth Bean Road is situated in the beautiful coastal village of Porth and overlooks the stunning Porth Beach which is approximately two miles from Newquay town centre.

The beautiful beach of Porth is loved by locals and tourists alike, it is patrolled by Lifeguards daily from the 15th May through to 26th September meaning it is perfect for families, couples and surfers. The Mermaid Inn, a traditional style pub and restaurant situated right on the beach. In addition there are spectacular coastal paths nearby such as the one out to the wildlife-rich Porth Island. Some of Cornwall's most stunning beaches including Watergate Bay, Mawgan Porth and Lusty Glaze are within easy reach. Newquay itself benefits from a range of fashionable bars and restaurants as well as some of Europe's finest coastline.

The town also boasts an historic working fishing harbour. There is a bus and rail service to outlying areas and Newquay airport is approximately four miles distance from the beautiful Porth Beach Retreat.





KITCHEN / LIVING / DINING ROOM

The property features three double-glazed windows to the front, creating a bright and welcoming interior. The kitchen/diner is fitted with a range of wall and base units and includes space for freestanding appliances and an oven. An inset one-and-a-quarter sink with mixer tap is also incorporated.

SHOWER ROOM

Walk in shower cubical with mains overhead shower and sliding door screen. Low level WC with dual flush. Wash hand basin. Electric wall mounted towel rail.

BEDROOM ONE

Double glazed window to the front aspect. Storage cupboard.

BEDROOM TWO

Double glazed window to the front and side aspect.

EXTERNAL

Parking for one car.

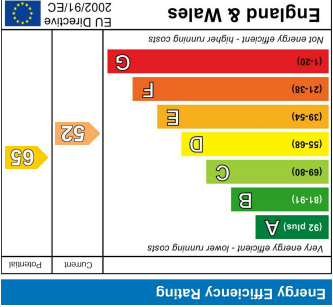
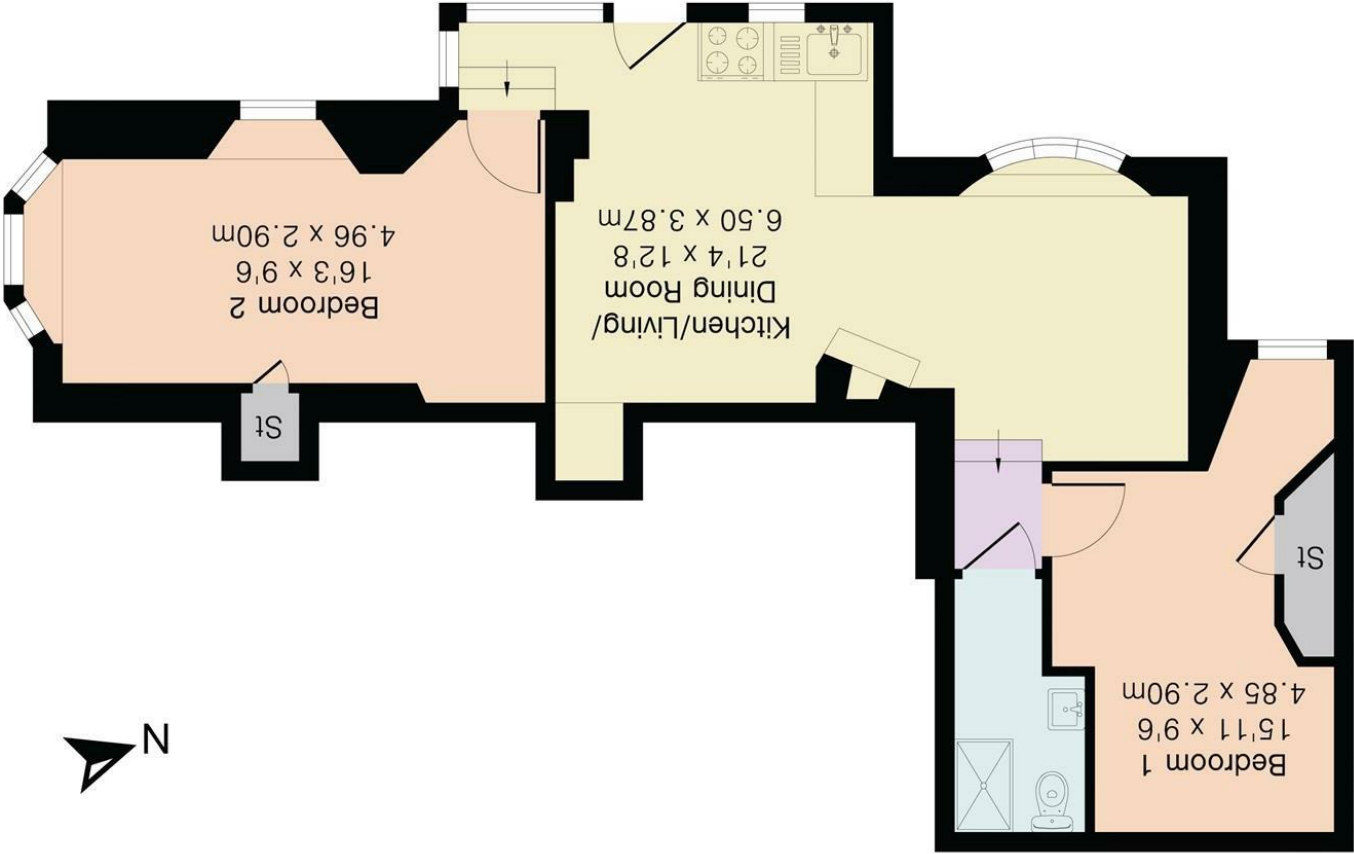
COUNCIL TAX BAND C

SERVICES

The following services can be found at the property: Mains electricity, gas, water and drainage, however, we have not verified any of the connections.



Approximate Gross Internal Area 594 sq ft - 55 sq m



david ball
Agencies

01637
850850

www.davidballagencies.co.uk

onTheMarket

rightmove

The Property
Ombudsman

Connecting People to Property Perfectly

e.sales@dba.estate
34 East Street, Newquay, Cornwall TR7 1BH

1. Particulars: these particulars are not an offer or contract nor part of one. You should not rely on statements by David Ball Agencies (DBA) in the particulars or by word of mouth or in writing as being factually accurate about the property, its condition or value. Neither DBA nor any joint agent has any authority to make any representation about the property or development and accordingly any information given is entirely without responsibility in the part of the agents, sellers or lessors. 2. Images paragraphs and other information: any computer generated images, plans, drawings, accommodation schedules, specifications details or other information provided about the property ("information") are indicative only. Any such information may change at any time and must not be relied upon as being factually accurate about the property. Any photographs are indicative of the quality and style of the development and do not represent the actual fitting and furnishing at this development. 3. Regulations: any reference to alterations to the property or use of any part of the development is not a statement that any necessary planning, building regulations or other consents has been obtained. These matters must be verified by an intending purchaser. 4. Fixtures and fittings: supplied services and appliances have not been tested by the vendors agent. Prospective purchasers are advised to make their own enquiries. 5. All dimensions are approximate.